



Baythroid[®]

Wettable Powder
EXPERT

- ✓ Wettable powder formulation.
- ✓ Long lasting residual.
- ✓ Low mammalian toxicity.
- ✓ Broad spectrum.

AREAS OF USE

- Food handling & processing establishments *
- Homes
- Farm buildings
- Stables
- Dairies
- Poultry Houses
- Indoor and/or Outdoors
- Hospitals
- Schools
- Military Barracks
- Ships
- Industrial Premises
- Piggeries
- Refuse dumps
- Camping sites
- Market places

* HACCP compliant

CHARACTERISTICS

- Wettable powder formulation.
- Contact pyrethroid insecticide.
- Long lasting residual.
- Low mammalian toxicity.
- Broad spectrum.
- Controls flying and crawling insect pests.
- Controls flies, including stable flies.

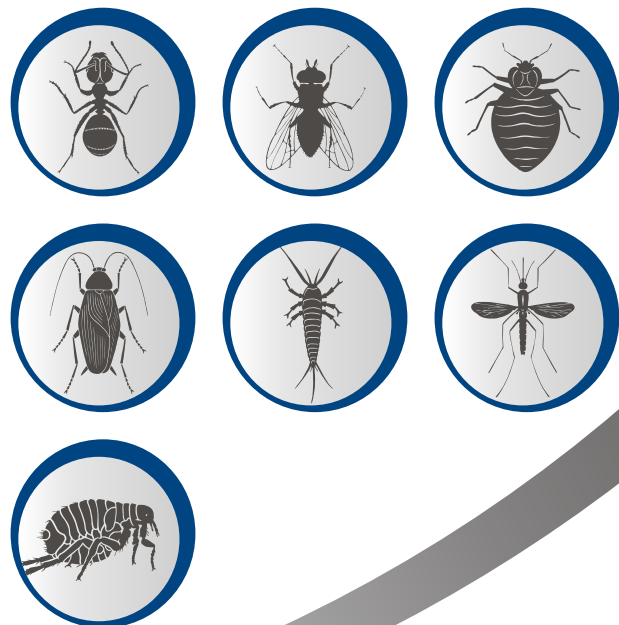
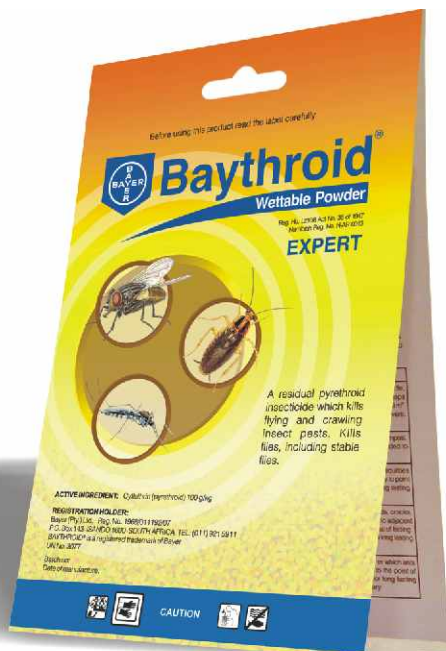
CONTROLS: Cockroaches, fleas, bedbugs, fishmoths, ants, house- & stable flies, fly maggots and mosquitoes.

APPLICATION:

PEST	DOSAGE	APPLICATION
FLIES, MOSQUITOES AND ANTS	20-40 g / 10 ℓ water.	Residual spray or with paint brush.
FLY MAGGOTS	5 g / 10 ℓ water.	Drench.
COCKROACHES, BEDBUGS, FLEAS AND FISHMOTHS	20 g / 10 ℓ water.	Residual spray or with paint brush.

RESIDUAL ACTION: 4 weeks.

PACKAGING: 20 g sachets.



Bayer (Pty.) Ltd. Reg. No.1968/011192/07 P.O. Box 143, ISANDO, 1600 SOUTH AFRICA TEL: (011) 921 5911 FAX: (011) 921 5754

Reg. No. L2198 Act No. 36 of 1947, Namibian Reg. No. N-AR 0013

Active Ingredient: Cyfluthrin (pyrethroid) 100 g/kg **CAUTION**

Baythroid® is a registered trademark of the Bayer Group.

© Bayer (Pty.) Ltd. Copyright 2014, All rights reserved. www.bayer.co.za



Bayer