

# WETCIT DUO



## BIO-PESTICIDE AND ADJUVANT WITH OROWET TECHNOLOGY

**OROWET** Technology is based on natural, cold-pressed orange oil and a proprietary blend of surfactants.

**4-in-1**

**Adjuvant  
Insecticide  
Miticide  
Fungicides**

At low rates **WETCIT DUO** can be used as a multi-purpose surfactant to improve wetting and coverage of sprays. By increasing the rate, **WETCIT DUO** can be applied as a bio-pesticide providing fast knockdown of insects, mites and diseases with no residual activity.

**WETCIT DUO** can be used in Integrated Pest Management (IPM) systems, with minimal impact on beneficial insect populations.

Orange oil has been exempt from MRL (Maximum Residue Level) restrictions and therefore **WETCIT DUO** has no pre-harvest interval.



**henchem**  
environmental management solutions

**Cape Town**  
Unit 6b, Palmiet street,  
Stikland  
(021) 948-7366

**Gauteng**  
Venturi park B3, Venturi Cres,  
Hennospark, Centurion.  
067 223 3760

**Durban**  
5 Eaton Road, Umbilo  
061 473 0162

[www.henchem.co.za](http://www.henchem.co.za) \* [enquiries@henchem.co.za](mailto:enquiries@henchem.co.za)

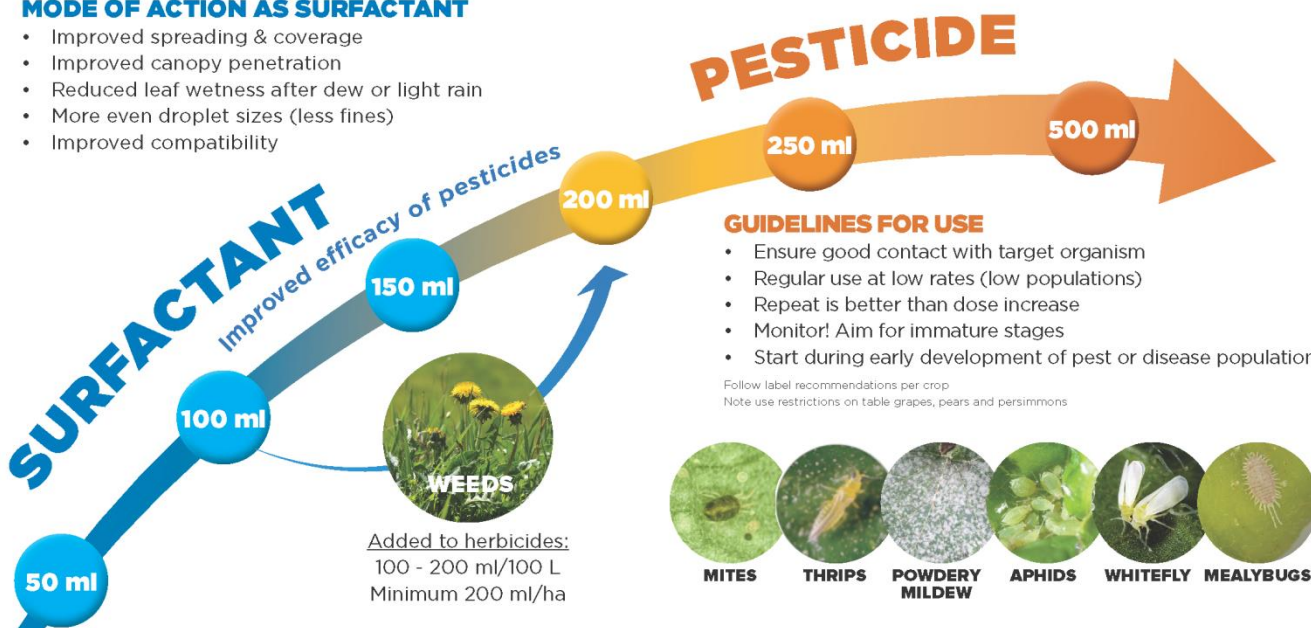


## MODE OF ACTION AS PESTICIDE

- Orange oil breaks down protective layers of target organisms
- Desiccation of target organism
- Smothering of insects
- Reduced fecundity of surviving mites
- Contact action, no residual control
- Minimal impact on beneficial insect populations

## MODE OF ACTION AS SURFACTANT

- Improved spreading & coverage
- Improved canopy penetration
- Reduced leaf wetness after dew or light rain
- More even droplet sizes (less fines)
- Improved compatibility



## GUIDELINES FOR USE

- Ensure good contact with target organism
- Regular use at low rates (low populations)
- Repeat is better than dose increase
- Monitor! Aim for immature stages
- Start during early development of pest or disease population

Follow label recommendations per crop  
Note use restrictions on table grapes, pears and persimmons



## DID YOU KNOW?

**WETCIT DUO has many different uses, including:**

- As a replacement for residual pesticides to control mites, insects and diseases.
- In combination with traditional residual pesticides to:
  - Improve efficacy against mites, insects or diseases.
  - Manage insect or disease resistance to pesticides (alternative mode of action).
- Up to harvest or during harvest intervals, when other chemicals are restricted by a pre-harvest interval.
- In IPM programs, when alternated with the release of beneficial insects.
- **To reduce the number of chemical active ingredients applied per season (fewer residues at harvest).**

## Dose range and possible uses of WETCIT DUO

Dose per 100 L	Purpose	Possible uses	Advantage
50 ml	Light wetting	<ul style="list-style-type: none"> <li>• With foliar nutrients or plant growth regulators</li> <li>• In high volume hand lance applications</li> </ul>	<ul style="list-style-type: none"> <li>• To replace various other low-dose adjuvants</li> </ul>
100 ml	General wetting	<ul style="list-style-type: none"> <li>• With insecticides, fungicides or herbicides</li> <li>• In mixture with citrus black spot sprays as registered</li> </ul>	<ul style="list-style-type: none"> <li>• Multi-purpose adjuvant</li> <li>• Improved pest, disease and weed control</li> <li>• Suppress secondary pests</li> <li>• Reduced disease pressure</li> <li>• Safe to use on many crops</li> <li>• Reduced drift</li> <li>• Control of certain pests at 200 ml</li> </ul>
150 ml	Improved wetting	<ul style="list-style-type: none"> <li>• With bud mite sprays on grapes</li> <li>• With dormant insecticide sprays on deciduous fruit</li> </ul>	
200 ml	Premium wetting Faster uptake of herbicides	<ul style="list-style-type: none"> <li>• Difficult-to-wet crops (e.g. Onions, Cruciferae)</li> <li>• Difficult-to-wet weeds</li> <li>• With rest break sprays on grapes</li> <li>• Minimum rate/ha with herbicides</li> </ul>	
200 - 500 ml	Use as pesticide	<ul style="list-style-type: none"> <li>• As per label recommendations</li> </ul>	<ul style="list-style-type: none"> <li>• Broad spectrum pest control</li> <li>• Low impact on beneficial insect populations</li> <li>• No chemical residues</li> <li>• No pre-harvest interval</li> <li>• Resistance management</li> </ul>

With  
**Trans Phloem**  
technology

TRANSLOCATION MOVEMENT

